



# MESSE BASEL

NEW EXHIBITION BUILDING

Basel - BS

## Owner

MCH Messe Schweiz (Basel) AG  
Messeplatz 1  
4058 Basel

## General contractor

HRS Real Estate AG  
Hochbergerstrasse 60c  
4057 Basel

## Architect/General planner

Herzog & de Meuron Basel Ltd.  
Rheinschanze 6  
4056 Basel

## Structural engineer

Ribi und Blum AG  
Konsumhof 3  
8590 Romanshorn

Gruner AG  
Gellertstrasse 55  
4052 Basel

## MEP engineering

Electrical engineer:  
Herzog Kull Group Zürich AG  
Rütistrasse 22  
8952 Schlieren

HVAC engineer:  
Lippuner Energie- und  
Metallbautechnik AG  
Werdenstrasse 84+86  
9472 Grabs

Sanitation engineer:  
Huusstechnik Rechberger AG  
Leutschenbachstrasse 45  
8050 Zurich

Geotechnical engineering:  
Pfister, Nyfeler + Partner AG  
Gartenstrasse 15  
4132 Muttlen

Construction physicist:  
Zimmermann + Leuthe GmbH  
Birkengasse 2  
4583 Aetigkofen

Facade engineer:  
Feroplan Engineering AG  
Uetlibergstrasse 132  
8045 Zurich

## Landscape architect

Vogt Landschaftsarchitekten AG  
Stampfenbachstrasse 57  
8006 Zurich

## Surveyor

Gruner AG  
Gellertstrasse 55  
4052 Basel

## Location of the building

Messeplatz Basel  
4058 Basel

## Planning

2009

## Execution

2010 - 2013

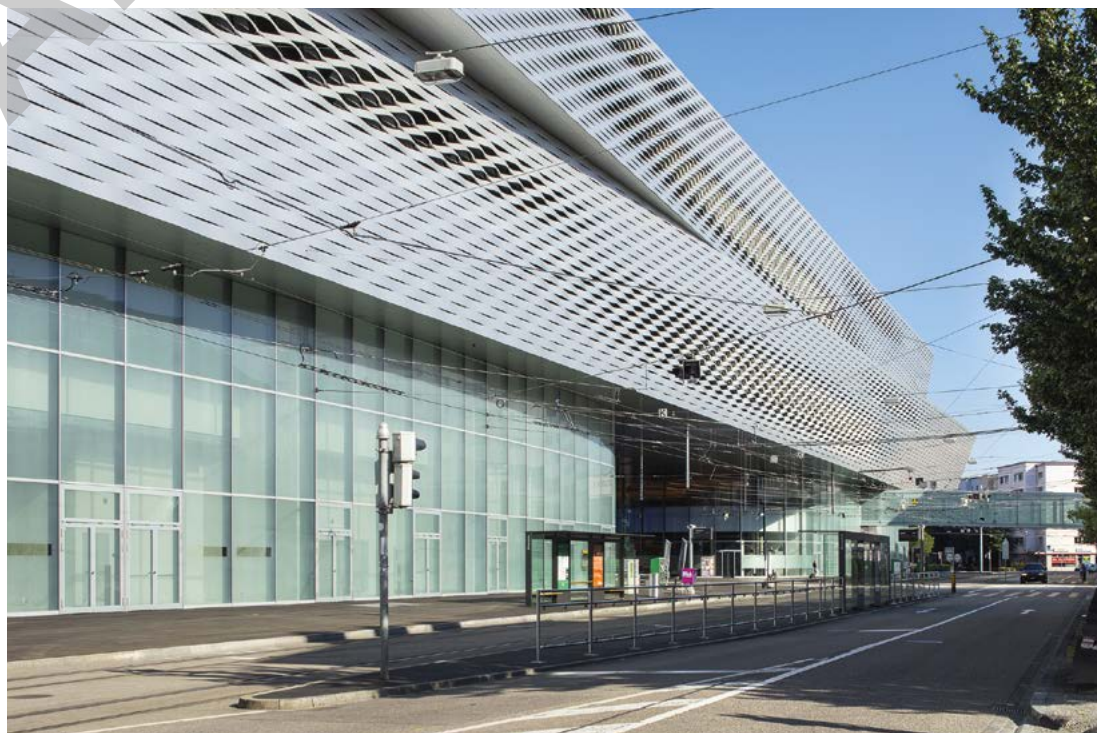


## LOCATION / HISTORY

Basel is considered the most important exhibition site in Switzerland, and one of the most significant in Europe. The largest watch and jewellery show in the world, BASELWORLD, and ART BASEL, an internationally renowned trade fair for contemporary art, provide Messe Basel with global publicity. In Switzerland, Basel is known for holding muba, Swissbau and the gastronomy trade fair, Igeho. Parts of the Autumn Fair, the largest and oldest amusement fair in Switzerland, also take place at Messe Basel. The exhibition grounds are located in the centre of the city, are very easy to reach with

both public and private transport, and offer an exhibition area of 141,000 m<sup>2</sup>, of which 83,000 m<sup>2</sup> are suitable for multi-storey stand constructions.

Eventually BASELWORLD in particular required more space and more modern infrastructure. So in 2005, the MCH Group, to which Messe Basel belongs, began planning new and larger exhibition halls. With a clear Yes vote three years later, the voters of the canton of Basel-Stadt agreed to a new exhibition centre. In 2008, HRS Real Estate AG was tasked with optimising the project and in autumn 2009, they were awarded general contractor status.





## CONCEPT

Two aged building complexes were demolished and replaced by a new build measuring 220 metres in length, 90 metres in width and 32 metres in height. Large bored piles were inserted into the ground to provide the foundations of the load-bearing supports. The core buildings and basements are made of reinforced concrete, while the hall ceilings are steel/concrete composite structures. The basements were connected by a tunnel.

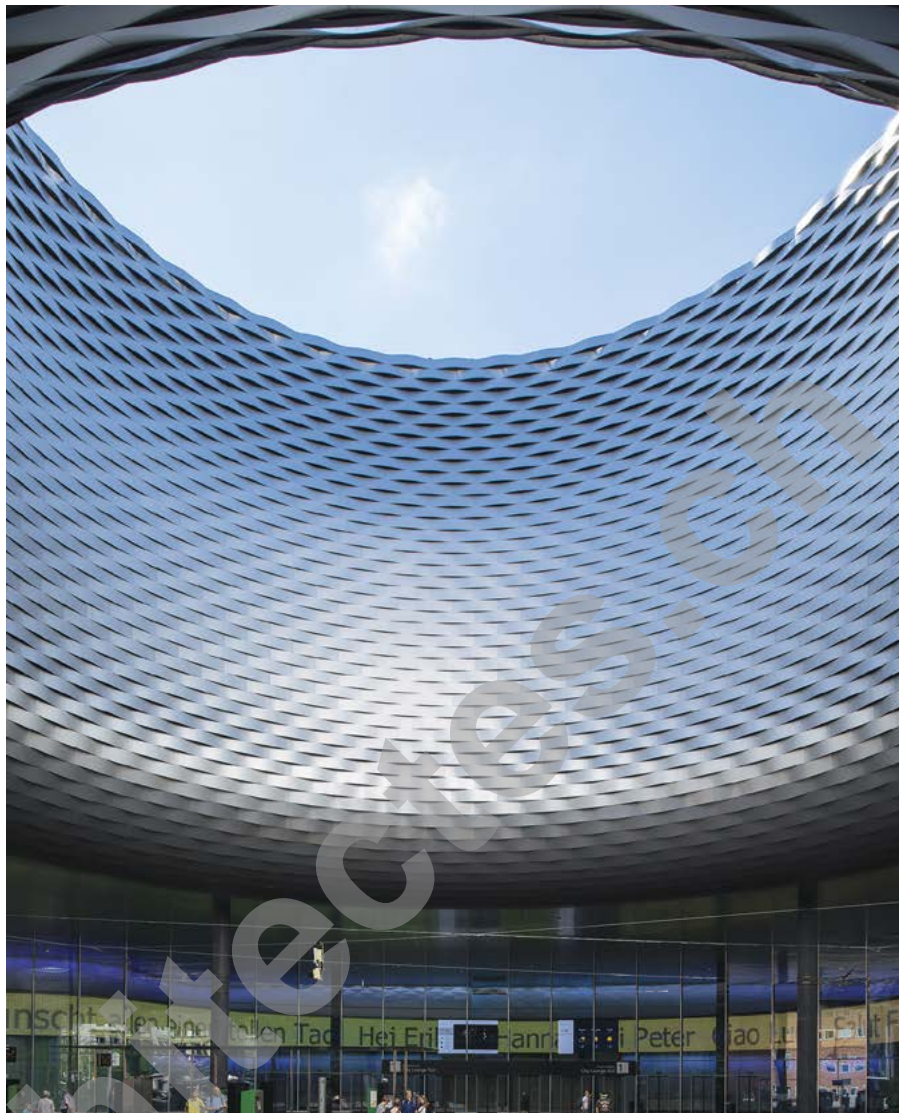
The two upper floors now span part of the exhibition site. This has considerably enlarged exhibition space, providing the grounds with more flexibility and comfort. In the eight- to ten-metre-high halls, exhibitors can even erect multi-storey stands. The multi-functional event hall with 2,500 places, located south of the exhibition site, is also part of the new exhibition centre building and connects to the Congress Center Basel via a new skywalk.

## ARCHITECTURE

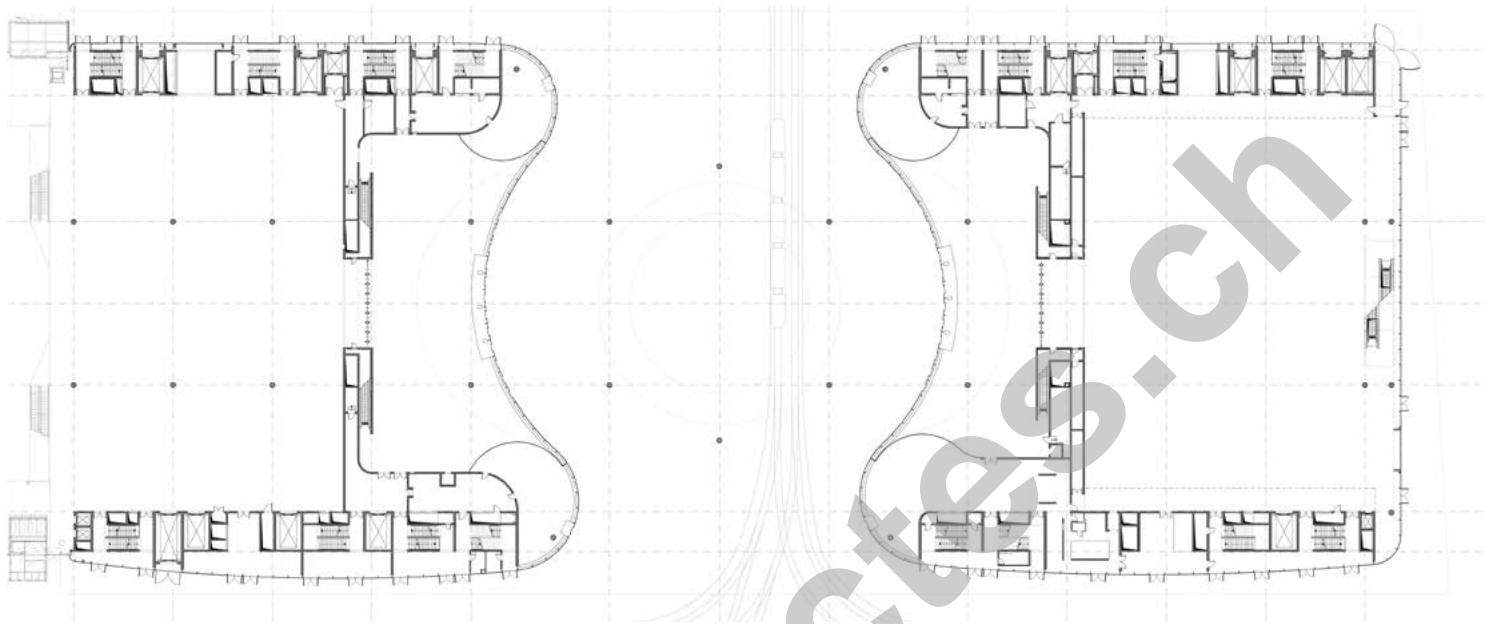
The new building, which was designed by renowned Basel-based architecture office Herzog & de Meuron, combines functionality and aesthetics in an almost perfect way. The upper part of the building consists of two hall structures, positioned on top of each other and projecting outwards over the street to varying extents. The ground floor is predominantly glazed to achieve spatial transparency as well as the intended opening of the hall complex and a dynamisation of public life.

The two hall floors are closed entities and are displaced against each other in such a way that they are perceived as separate units.

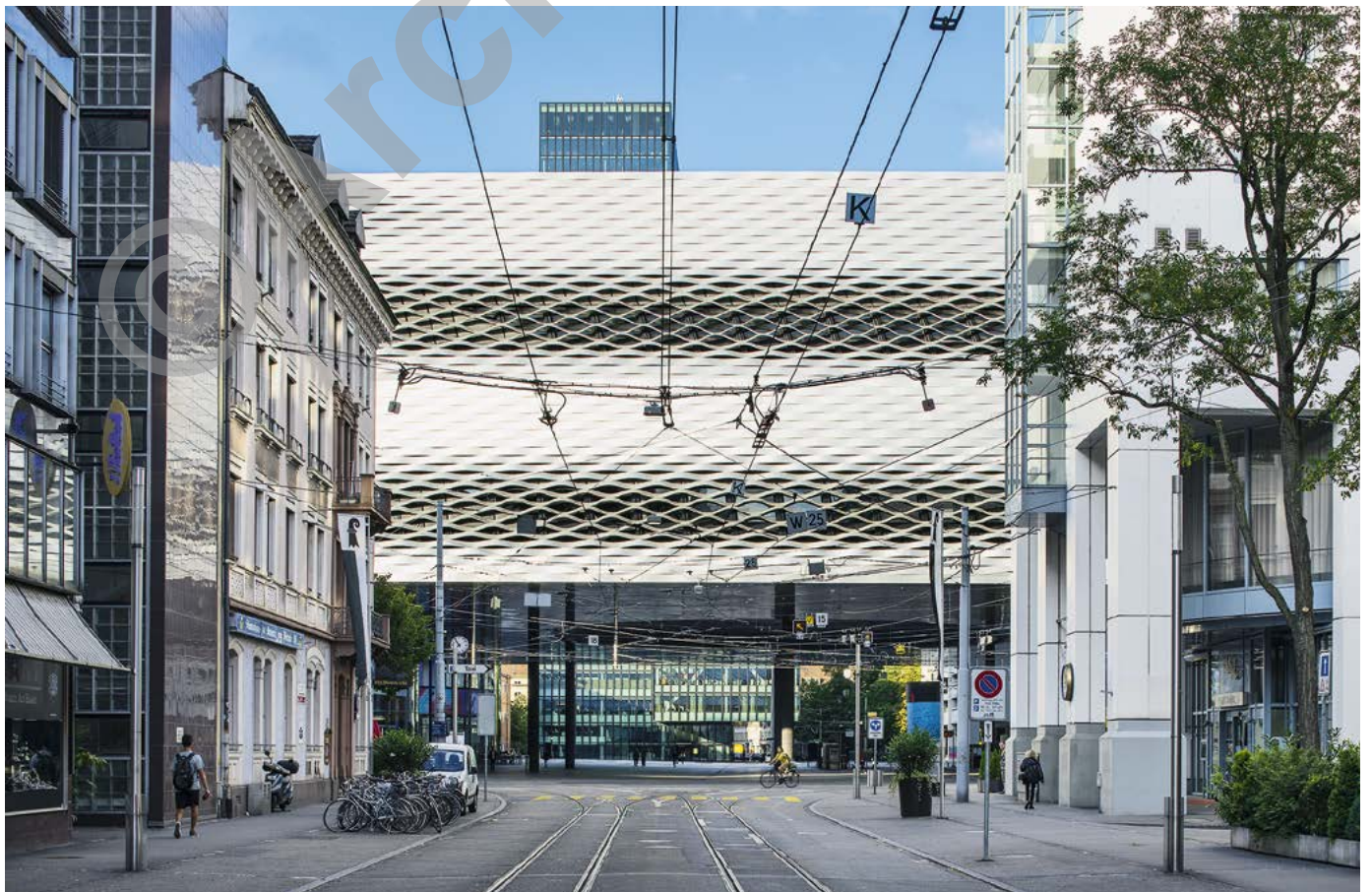
Twisting the facade of the ground floor reinforced the architectural differentiation. The cladding of the top



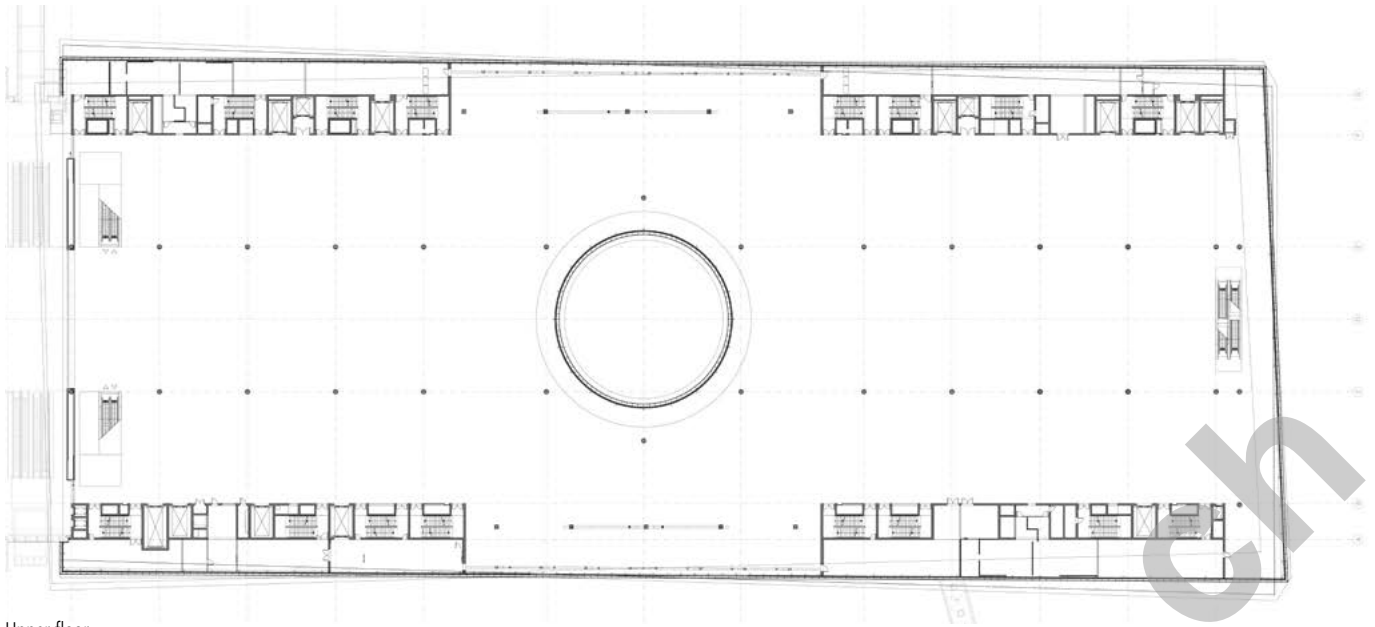




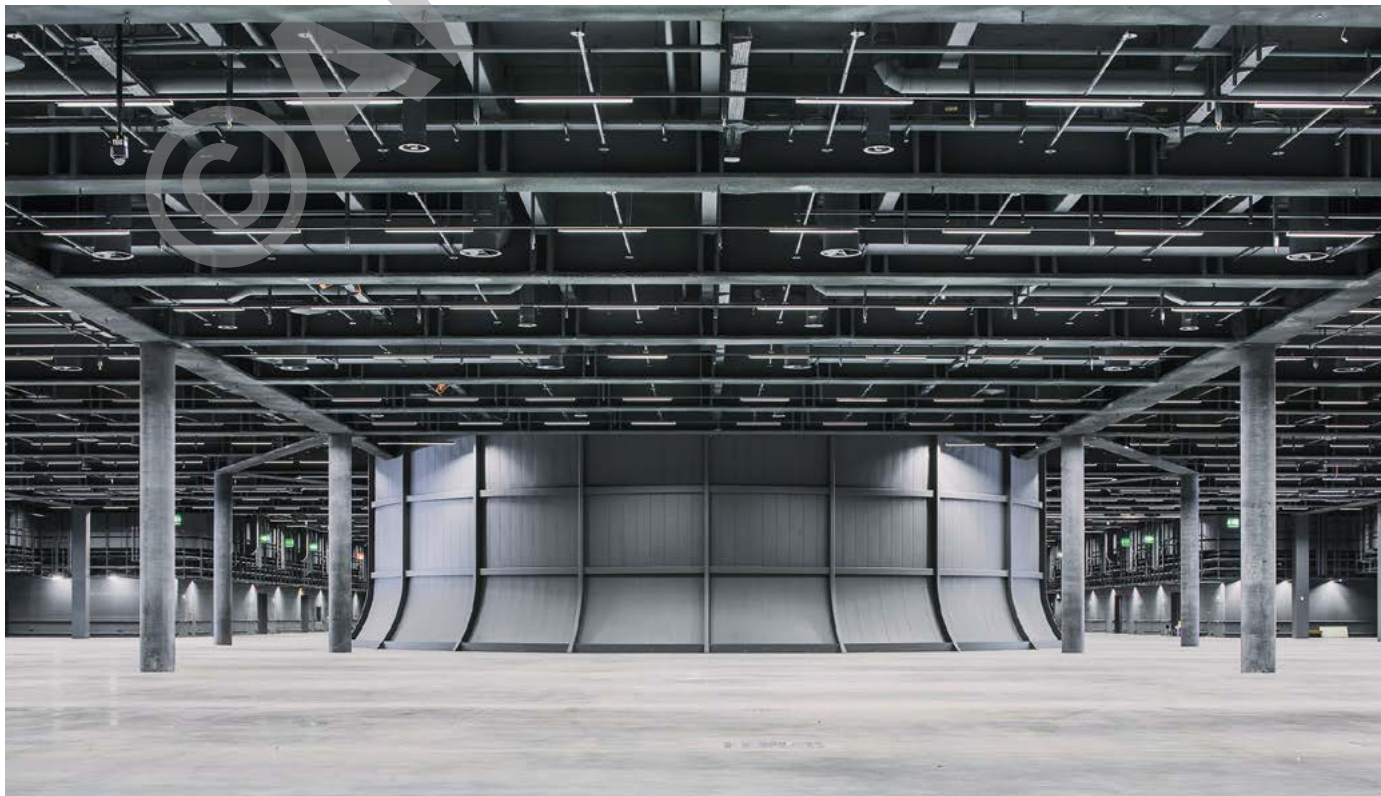
Ground floor



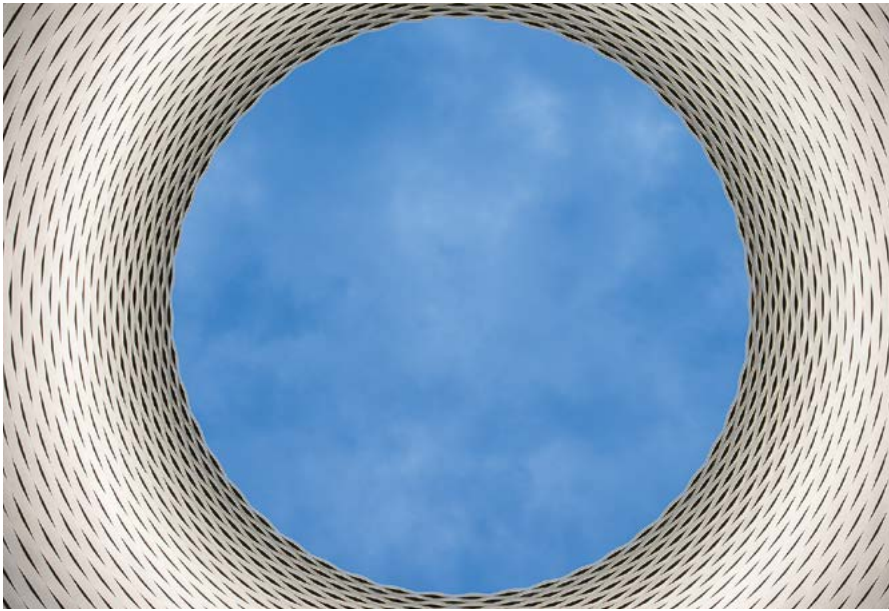




Upper floor







storeys looks like a fabric woven from metal strips and is made from individually bolted aluminium elements, some of which have been positioned so that wave-like clusters allow views from the halls over the cityscape.

The "City Lounge" is a central architectural element – a covered public space with a tram stop. This not only marks the entrance to trade fairs and the event hall, it has also become a focal point of public life. In the middle of the "City Lounge", fascinated visitors look through a circular opening that reaches through both top floors. This atrium – "a window to heaven", as the architects call it – makes the new build an impressive visiting card.

## FEATURES

The building of the new exhibition grounds in Basel is the largest construction project that HRS Real Estate AG has realised to date. Messe Basel placed high demands on the project management as the different requirements of an exhibition centre of such dimensions are enormous. The biggest challenge was the very tight schedule. In February 2013, the new halls had to be handed over. This is due to the announcement years before that BASELWORLD would be taking place in the new halls from April 2013.

The building process had to be planned in such a way that the trade fairs and events could still be carried out without any particular restrictions. This demanded a high degree of flexibility from all involved. At peak times about 1,200 workers were on-site at the same time. The work was carried out in one and two-shift operations. Night shifts were also needed at times.

To provide just a few numbers, 1,200 concrete elements, 46,000 m<sup>2</sup> of ceiling panels and 14,000 facade elements were installed for the new build. On average, 20 HGVs per hour were on the road for deliveries. For this reason, HRS Real Estate AG set up an interim warehouse and checkpoint for dispatching lorries at the Basel harbour.



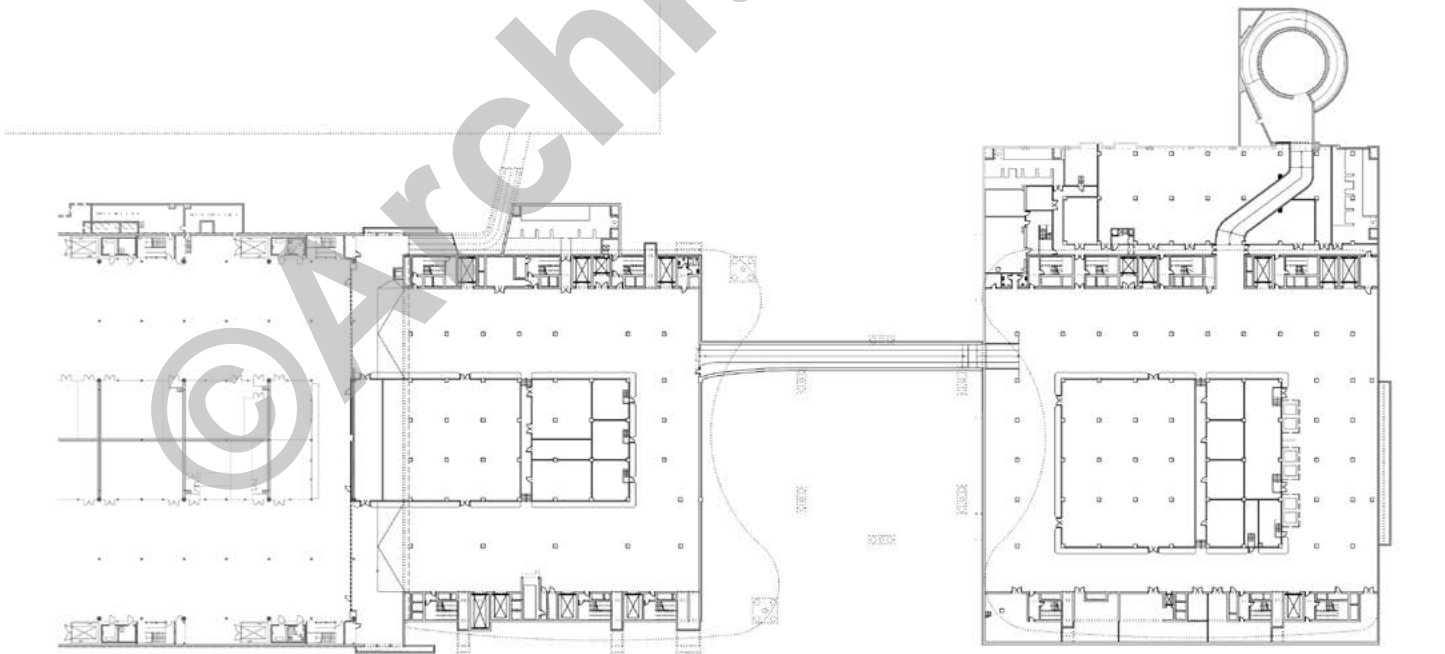
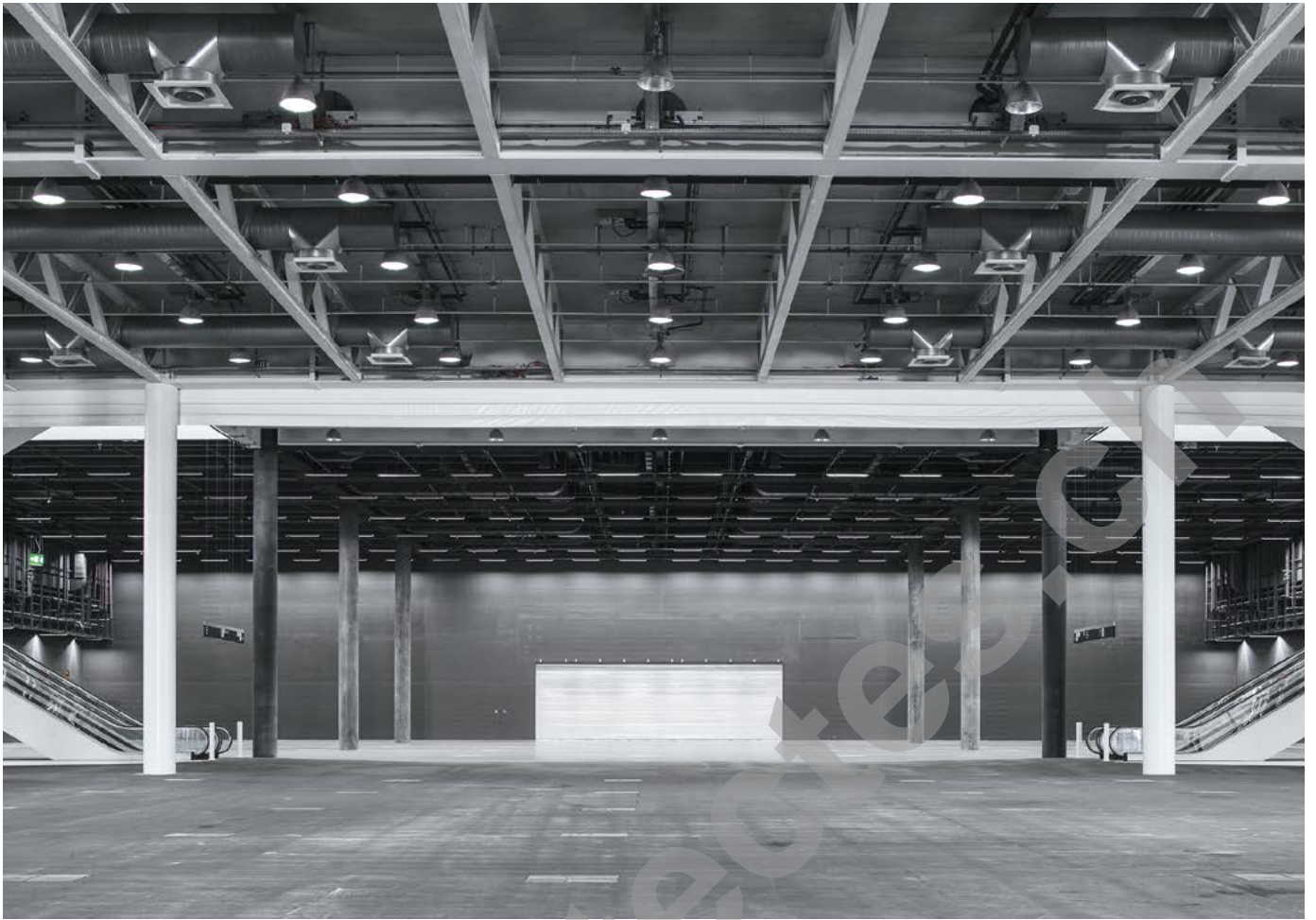


There was virtually no space on the city-centre building site, which was surrounded by heavily trafficked roads and tram lines. For this reason, the general contractor decided on a vertical construction method and split the project into 22 stages. Using eleven stationary building cranes and an average of six mobile cranes, the construction followed a precisely defined sequence of assembly. During the building phase, one person was charged with continually updating the schedule and logistical plans.

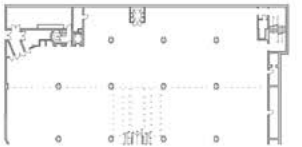
## ENERGY CONCEPT/SUSTAINABILITY

The new exhibition centre building has a highly thermal-insulating cladding and is connected to the district heating grid of the city of Basel. Thanks to these sustainability efforts, the Minergie certifying body of Basel-Stadt awarded the new build its own Minergie label, specially developed for this project. In addition, the target values of the SIA Standard 380/4 in terms of lighting and ventilation/air conditioning were met. The green roof is another example of the sustainable focus of the project.





Basement







**PROJECT DATA**

Total costs:	about CHF 430 million
SIA volumes:	664,000 m <sup>3</sup>
Gross floor space:	83,000 m <sup>2</sup>
Lower storeys: (1 mezzanine floor)	1
Ground floor + upper floors: (3 full storeys and 3 mezzanine floors)	3
HVAC equipment rooms: (on the roof)	4
Exhibition space	
Ground floor:	6,500 m <sup>2</sup>
1 <sup>st</sup> upper floor:	14,850 m <sup>2</sup>
2 <sup>nd</sup> upper floor:	14,750 m <sup>2</sup>

